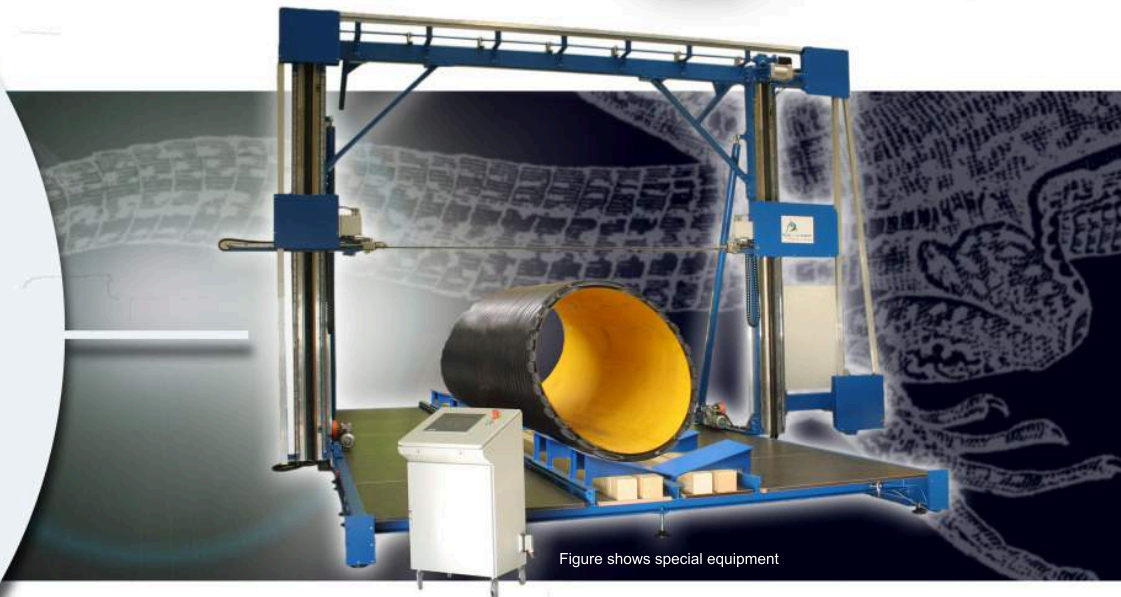


Made in Germany
Since 30 years
www.riex.de



GR-BSM Large Electric Bandsaw for big pipes up to Ø 4500 mm

Machine Description

- Innovative bandsaw concept with a mobile saw bow
- Precision angle cuts (0°... 45° stepless / 67,5° / 90° cross cut)
- Low level pipe support
- Saw band easy to change (without climbing aids)
- Fine adjustment of the cutting position without moving the pipe
- Dialog multi-language operation with touch-screen

Various customized versions available!

Technical Data

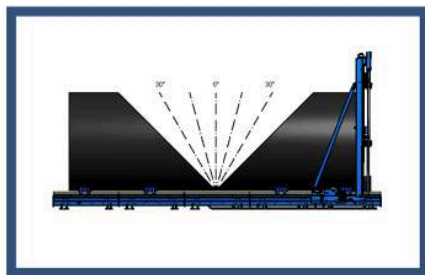
Technical Data	GR-BSM 1200	GR-BSM 2500	GR-BSM 3500	GR-BSM 4500
Length in mm	8400	8400	10600	12600
Width in mm	5000	6600	7800	8900
Height max. in mm	3000	4300	5300	6400
Weight in kg	5000	7000	9000	12000
Cutting range in mm (external diameter)	355-1200	630-2500	630-3500	630-4500
Transport	delivered partially disassembled in a truck or container			

Further variants and sizes available on request

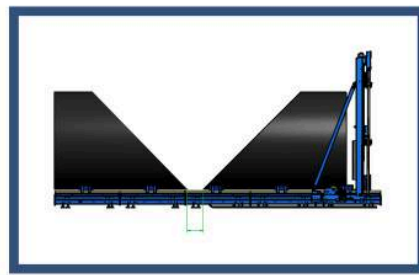
Electrical Data

Saw band drive 5,5 kW
Connecting 3 x 400 V

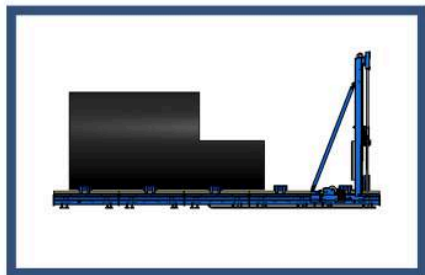
Standard cuts



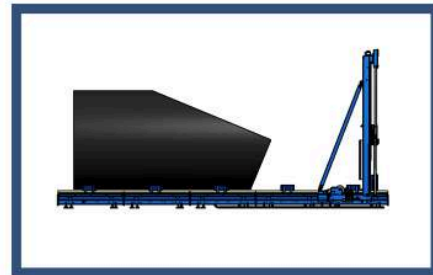
Cutting area $-45^\circ \dots 0^\circ \dots +45^\circ$



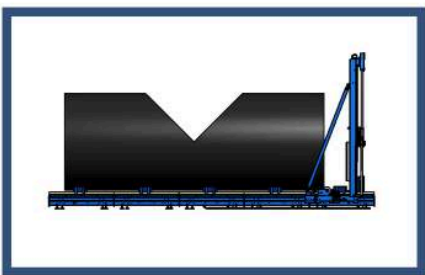
Standard cutting area with fine adjustment



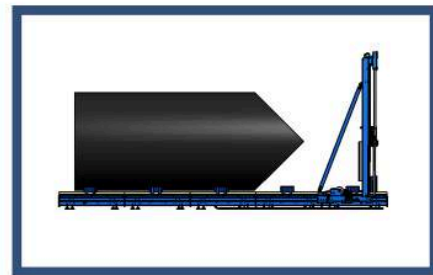
90° Cross cut



Y-piece outlet pipe $67,5^\circ/22,5^\circ$



T-piece main pipe

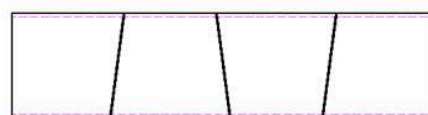


T-piece outlet pipe

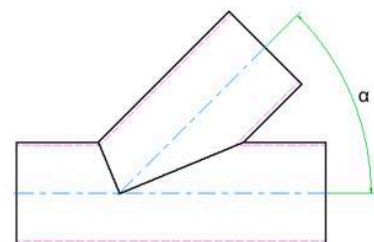
Cutting options



Y-piece main pipe



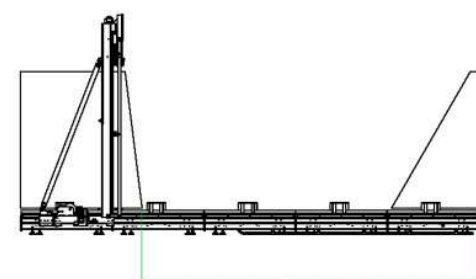
Automatic segments pieces (pipe must not be rotated, programmable)



Flexible angle
(main pipe/exit pipe)



Radius cut



Open cut area

With the help of this sawing system, each required cut can be produced cost-effectively. There are various outline cuts possible without moving or rotating the pipe. This results in an up to now not achievable accuracy and quality and a tremendous time saver.

The innovative large pipe cutting system for plastic pipes, infrastructure, water/waste water utilities, environmental

Water or waste water piping systems are nowadays mostly made of plastic. The pipes have a diameter of up to 4.5 meters. In the large diameters the pipes need to be processed safely and precisely.

Our sawing machines are designed that all the work can be done by machine, computer controlled, precision, resource-friendly and can be carried out by persons without risk.

The time savings over conventional machining is extremely high at around 75%. The saws are characterized by a prominent functionality in the pipe machining and fitting finishing. The quality of the final product increases by around 100%. A new standard is born.

By a precisely executed saw cut, it is possible to process the component without subsequent machining. By using different saw band types, matched to the material, the handling of a large number of plastics and plastic-compounds is possible. Wall thicknesses from a few millimeters to more than 100 mm are no problem for these saws.

The machines have safety switches, automatic off functions and are equipped with modern overload modules for motor and electrical components. Electronic brake modules for the abrupt saw band shut down are also part of standard, as a linelaser device which indicates the cut position.

The operation of the large pipe saws are via a large touch-panel that allows the operator a good and simple overview. The operator is guided step by step through the individual menus with graphical user interfaces he can navigate and select very quickly.

In view of the security when the saw blade must be changed the system sets new standards. Due to the large system size is usually a band saw change a time-and-safety-critical operation that must be carried out only with accessories. Not so with the saw system of Riexinger. The whole saw bow is easy to deposit for changing the saw band, so no more ladders or lifting devices are required. The down time of the saw during the saw band changing is thus reduced to a minimum.

Challenge us! We offer solutions!

Saw band change without climbing aids



Figure shows special equipment

innovative system

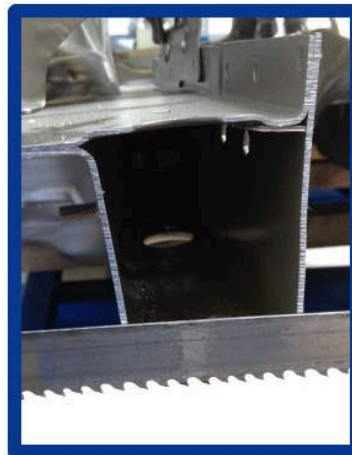
Model: Special edition GR-BSM 1200-S



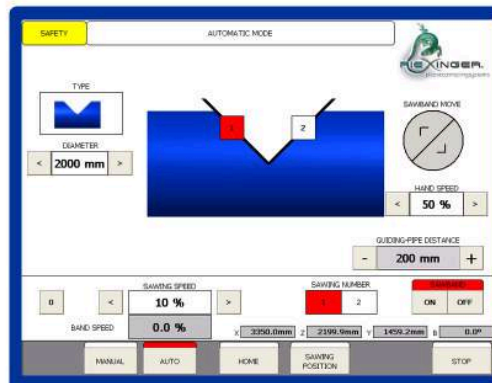
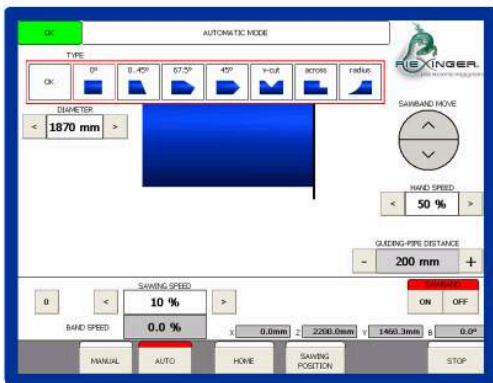
Mobile pneumatic clampings guarantee a precise cut without deformation of the pipe



tangential
radius cut



test cut
through
car body



Panel sight touch-display

Pictures show special equipment

Eugen Riexinger GmbH & Co. KG
Egartenring 2 . D-75378 Bad Liebenzell
Phone +49 (0)7052-93090-0 . Fax +49 (0)7052-93090-33
info@riex.de . www.riex.de